

NETO ridership

September 1-30, 2019 (Phase I)



Trips

719

Trips to date

6,983

Pick ups

Goodyear	63	Goodyear	80
Reser's	229	Reser's	172
Smuckers	84	Smuckers	86
US Foods	2	US Foods	3

Drop offs

Trips by Zone

Zone 1 (North of 6 th St.)	161
Zone 2 (Between 6 th & 29 th St.)	455
Zone 3 (South of 29 th St.)	103

Average Time

18.6 minutes

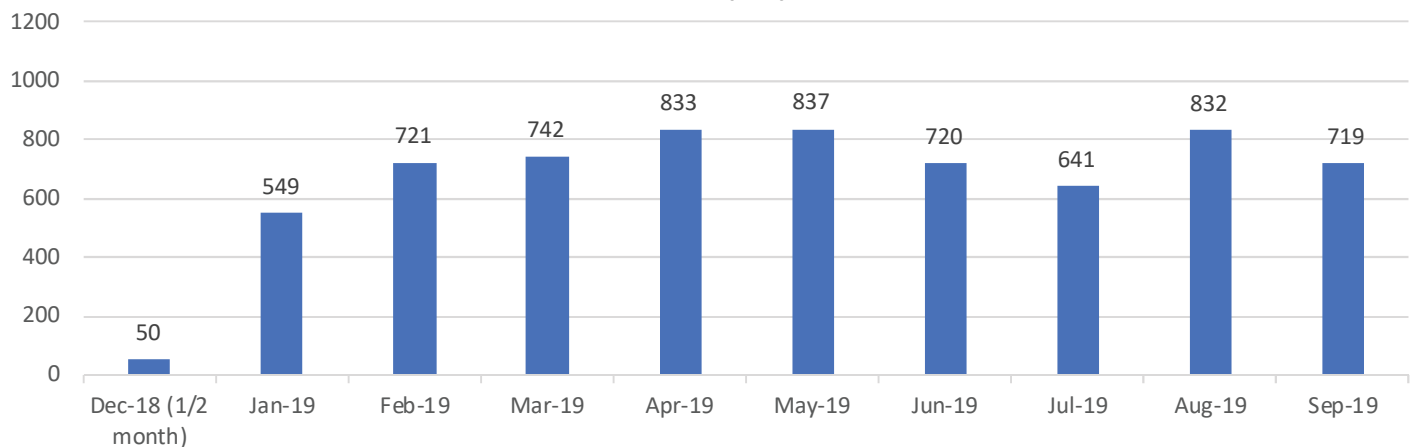
Average Distance

8.4 miles

Trips by Time of Day

- 25% of trips taken between 5am-9am
- 24% of trips taken between 2pm-7pm
- 24% of trips taken between 10pm-3am

NETO Ridership by Month

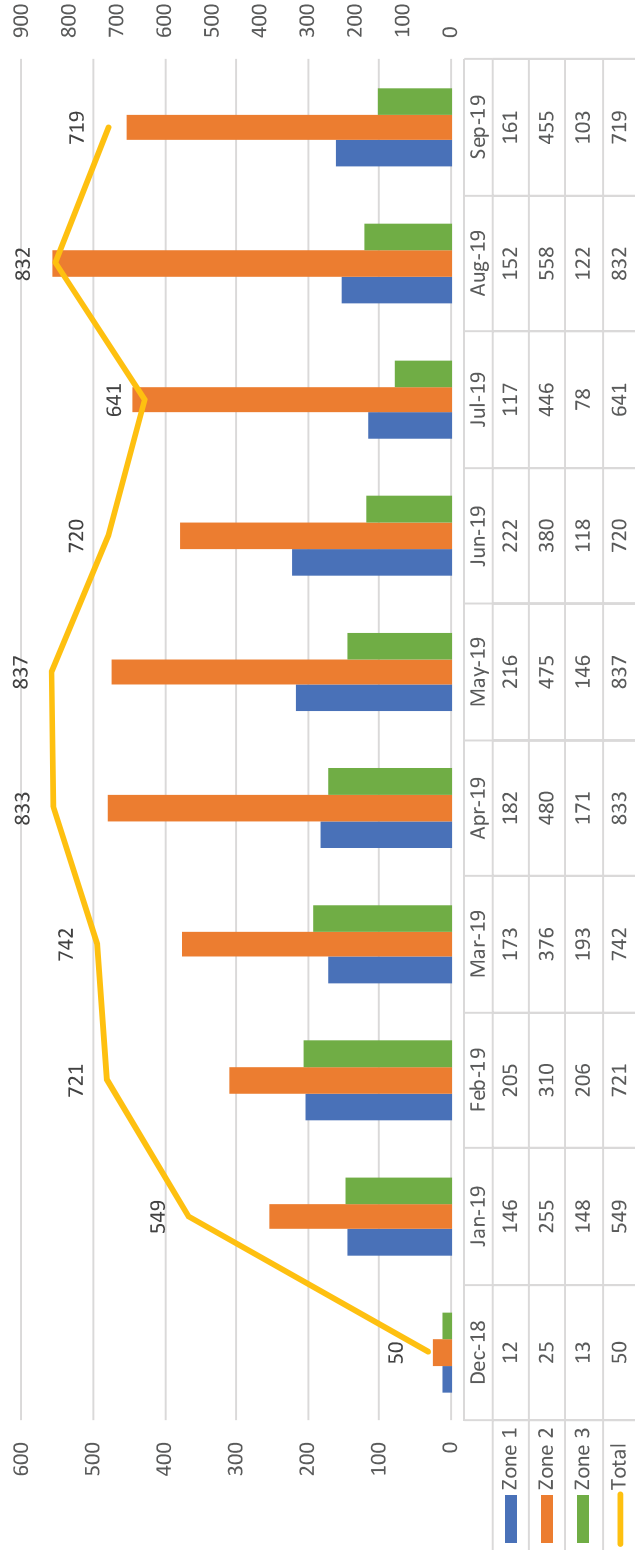


NETO ridership

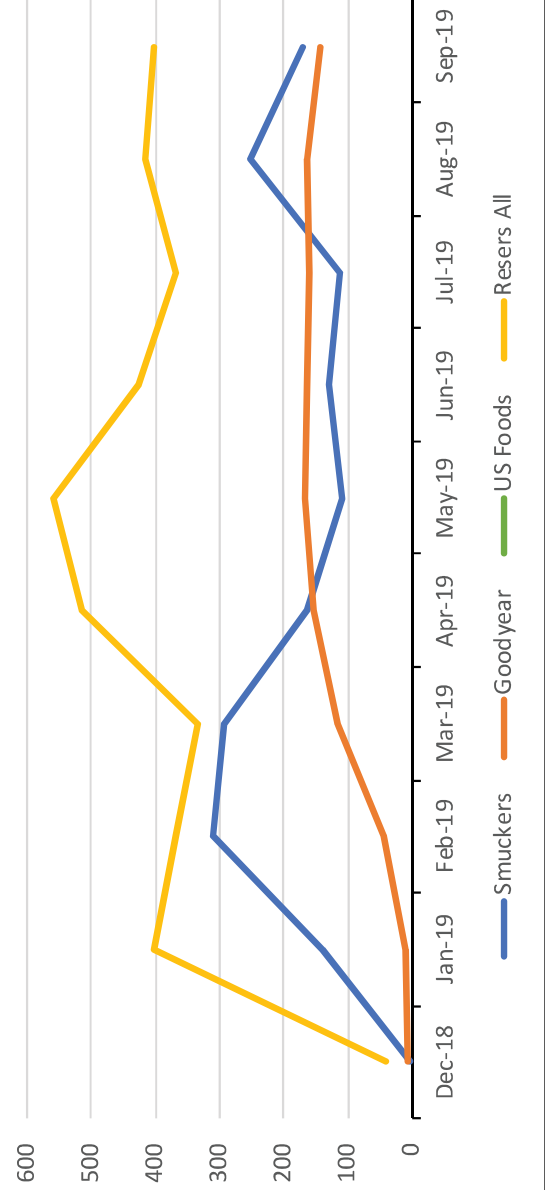
Monthly comparisons - September 2019



NETO Ridership by Month and Zone, 2018-present



NETO Ridership by Employer, September 2019



SOTO ridership

September 1-30, 2019 (Phase II)



Trips

612

Trips to date

16,184

Pick ups

Target	162
Frito Lay	106
Bimbo Bakeries	12

Drop offs

Target	158
Frito Lay	143
Bimbo Bakeries	31

Trips by Zone

Zone 1 (North of 6 th St.)	114
Zone 2 (Between 6 th & 29 th St.)	420
Zone 3 (South of 29 th St.)	78

Average Time

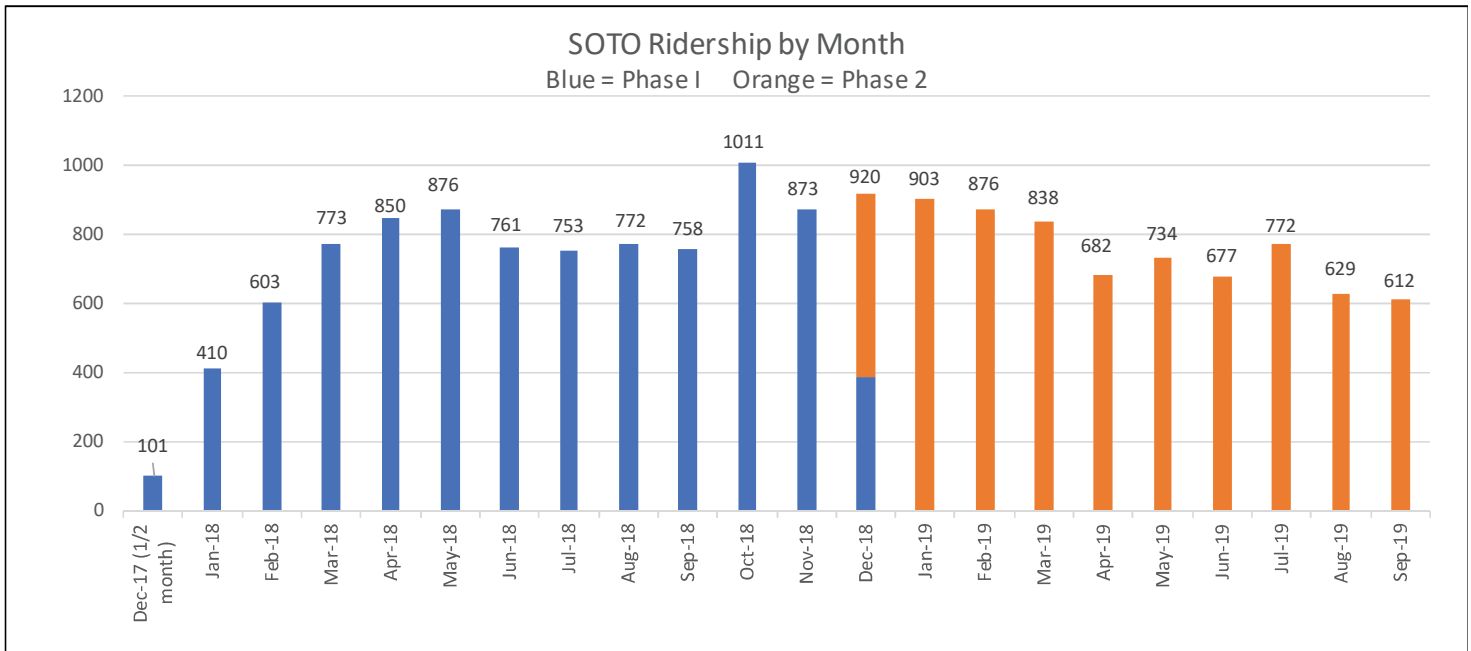
19.6 minutes

Average Distance

8.7 miles

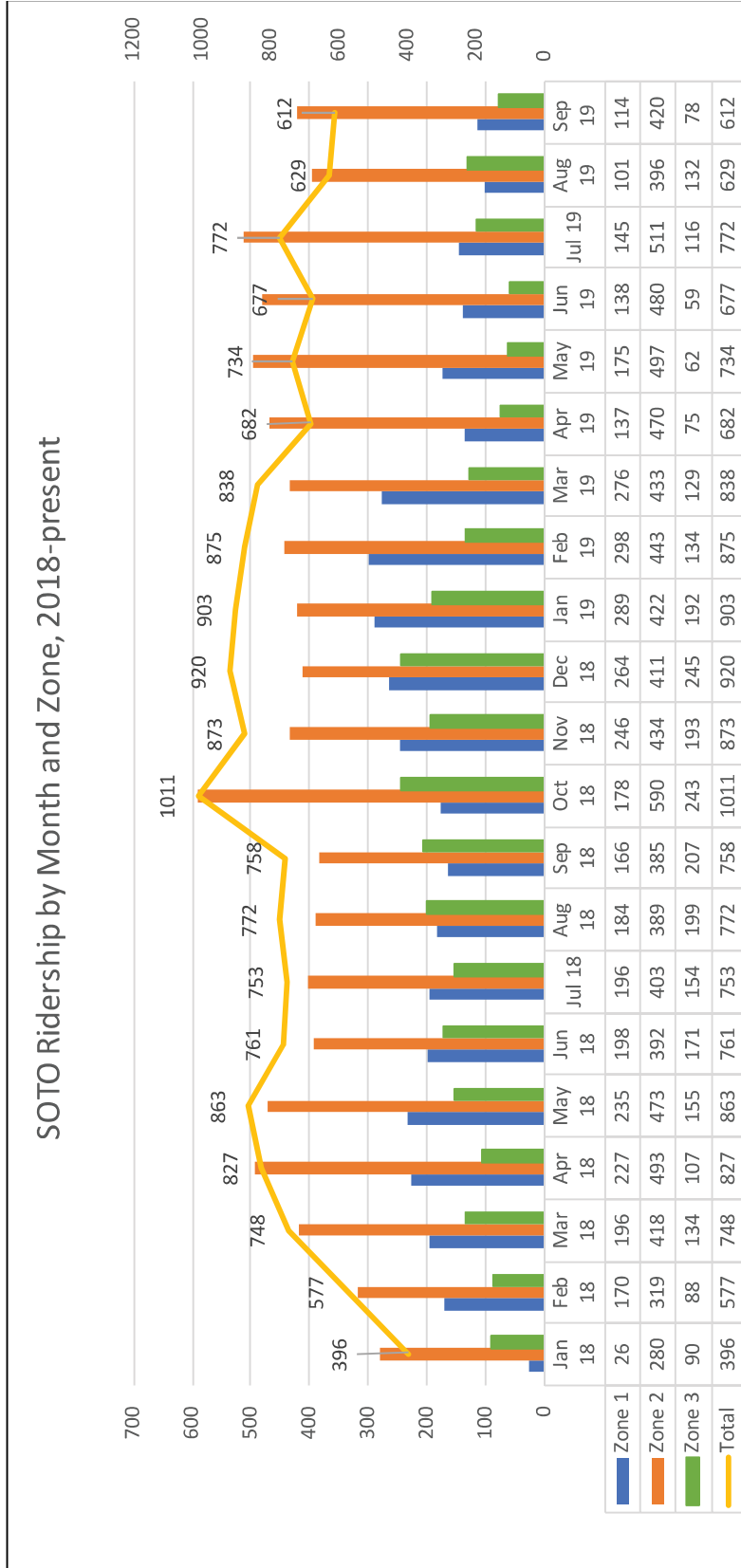
Trips by Time of Day

- 16% of trips taken between 5am-9am
- 35% of trips taken between 2pm-7pm
- 24% of trips taken between 10pm-3am



SOTO ridership

Monthly comparisons - September 2019



SOTO ridership (continued)

Monthly comparisons - September 2019

